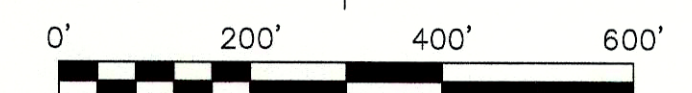


CERTIFY TO:  
THOMAS K. EQUELS  
COMMUNITY BANK & TRUST OF FLORIDA  
ATTORNEY G. SHEPPARD W. DOZIER  
FIRST AMERICAN TITLE INSURANCE COMPANY  
CASHEL STUD, INC.



NUMBER	RADIUS	DELTA	ARC	CHORD	CHORD BEARING
C1	100.00'	41°44'57"	72.87'	71.26'	N60°17'13"E
C2	75.00'	132°58'09"	174.06'	137.54'	S82°33'12"E
C3	100.00'	30°39'22"	53.50'	52.87'	S31°23'48"E
C4	75.00'	49°33'32"	64.87'	62.87'	S71°30'15"E
C5	125.00'	34°01'11"	74.22'	73.13'	N78°22'41"E

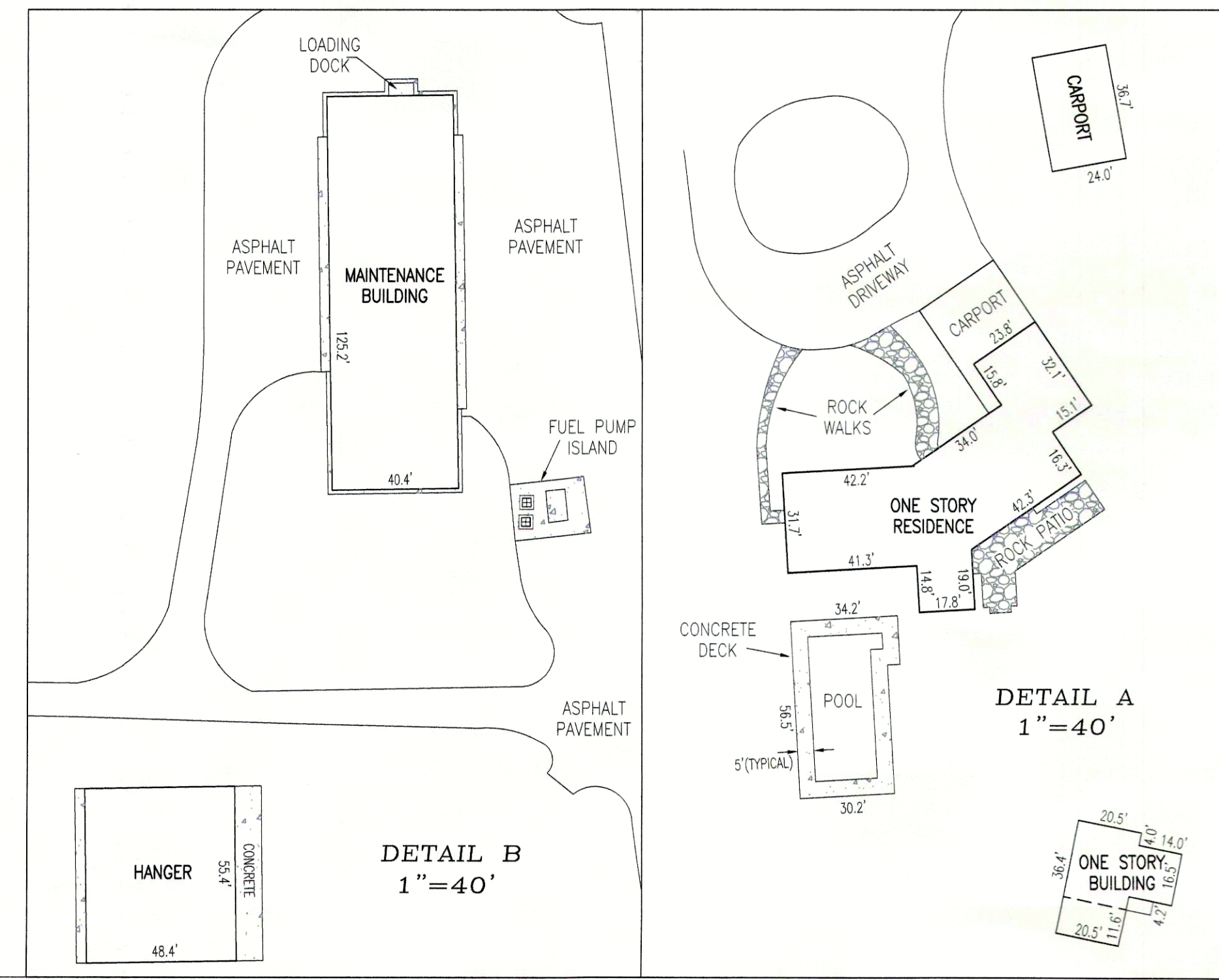
LINE	BEARING	DISTANCE
L1	N39°24'44"E	111.05'
L2	N30°57'44"E	281.79'
L3	S18°04'07"E	102.70'
L4	S48°43'29"E	150.91'
L5	N83°33'29"E	298.62'
L6	N61°22'06"E	93.40'
L7	S84°36'43"E	130.19'
L8	N53°19'11"E	159.23'
L9	N59°03'16"E	90.56'
L10	N72°37'00"E	140.11'
L11	S54°01'40"E	76.76'
L12	N69°08'24"E	86.20'

L14	S83°08'30"W	393.53'(fm)	(d)	S83°06'24"W	393.56'
L15	N61°22'27"W	90.79'(fm)	(d)	N61°27'09"W	90.77'
L16	N46°34'22"W	83.48'(fm)	(d)	N46°35'57"W	83.60'
L17	N09°45'15"E	70.88'(fm)	(d)	N09°44'23"E	70.98'
L18	N00°07'37"W	281.46'			

- NOTES:
- 1) BEARINGS BASED ON AN ASSUMED MERIDIAN AS SHOWN HEREON.
  - 2) UNDERGROUND IMPROVEMENTS, IF ANY, NOT LOCATED.
  - 3) PUBLIC RECORDS HAVE NOT BEEN SEARCHED FOR RIGHTS OF WAYS, EASEMENTS, RESTRICTIONS, RESERVATIONS AND/OR OTHER INSTRUMENTS OF RECORD.
  - 4) THIS SURVEY HAS BEEN PREPARED FOR THE SOLE AND EXCLUSIVE BENEFIT OF THE PARTIES NAMED HEREON AND SHALL NOT BE RELIED UPON BY ANY OTHER INDIVIDUAL OR ENTITY.
  - 5) SYMBOLS USED TO REPRESENT SURVEY MARKERS, UTILITIES AND IMPROVEMENTS MAY BE EXAGGERATED FOR INFORMATIONAL AND PICTORIAL PURPOSES ONLY AND ARE NOT INTENDED TO BE RELIED UPON FOR LOCATION PURPOSES.
  - 6) ALL PARTIES REFERENCING THIS SURVEY ARE HEREBY REQUIRED TO VERIFY THE LOCATION AND COVER OF ALL PERTINENT UTILITIES AND ARE HEREBY NOTIFIED THAT THERE MAY BE ADDITIONAL UTILITIES THAT WERE NOT LOCATED HEREON.
  - 7) SEE ADDENDUM "A" FOR BRIDLE TRAIL EASEMENT DESCRIPTIONS.

DESCRIPTION

A PORTION OF THE NORTH 1/4 OF SECTION 5, TOWNSHIP 17 SOUTH, RANGE 22 EAST LYING WEST OF STATE ROAD NO. 475 AND THE NORTH 1/2 OF THE NE 1/4 OF SECTION 6, TOWNSHIP 17 SOUTH, RANGE 22 EAST AND THE SOUTH 1/2 OF THE SW 1/4 OF SECTION 32, TOWNSHIP 16 SOUTH, RANGE 22 EAST LYING WEST OF STATE ROAD NO. 475 AND THE SE 1/4 OF THE SE 1/4 OF SECTION 31, TOWNSHIP 16 SOUTH, RANGE 22 EAST AND THE SOUTH 1/2 OF THE SW 1/4 OF THE SE 1/4 OF SECTION 31, TOWNSHIP 16 SOUTH, RANGE 22 EAST, ALL LYING IN MARION COUNTY, FLORIDA, BEING MORE PARTICULARLY DESCRIBED AS FOLLOWS: COMMENCE AT THE NW CORNER OF THE NE 1/4 OF SAID SECTION 6, TOWNSHIP 17 SOUTH, RANGE 22 EAST; THEN S 89°54'52"E, ALONG THE NORTH LINE OF THE NE 1/4 OF SAID SECTION 6, A DISTANCE OF 85.29 FEET TO THE SW CORNER OF THE SE 1/4 OF SAID SECTION 31, TOWNSHIP 16 SOUTH, RANGE 22 EAST; THEN S 89°58'14"E, ALONG THE NORTH LINE OF THE NE 1/4 OF SAID SECTION 6 AND THE SOUTH LINE OF THE SE 1/4 OF SAID SECTION 31, A DISTANCE OF 482.57 FEET TO THE POINT OF BEGINNING; THEN S 0°00'19"E, ALONG A LINE THAT IS PARALLEL WITH THE WEST LINE OF THE NE 1/4 OF SAID SECTION 6, A DISTANCE OF 256.04 FEET; THEN S 89°59'49"E, A DISTANCE OF 634.23 FEET; THEN S 0°00'19"E, A DISTANCE OF 659.51 FEET; THEN N 89°30'29"E, A DISTANCE OF 923.66 FEET; THEN N 88°00'28"E, A DISTANCE OF 257.24 FEET; THEN N 81°09'41"E, A DISTANCE OF 447.27 FEET TO THE POINT OF CURVATURE OF A CURVE CONCAVE NORTHWESTERLY, HAVING A RADIUS OF 100.00 FEET, A CENTRAL ANGLE OF 41°44'57" AND A CHORD BEARING AND DISTANCE OF N 60°17'13"E, 71.26 FEET; THEN ALONG AND WITH THE ARC OF SAID CURVE 72.87 FEET TO THE POINT OF TANGENCY; THEN N 39°24'44"E, A DISTANCE OF 111.05 FEET; THEN N 30°57'44"E, A DISTANCE OF 281.79 FEET TO THE POINT OF CURVATURE OF A CURVE CONCAVE SOUTHWESTERLY, HAVING A RADIUS OF 75.00 FEET, A CENTRAL ANGLE OF 132°58'09" AND A CHORD BEARING AND DISTANCE OF S 82°33'12"E, 137.54 FEET; THEN ALONG AND WITH THE ARC OF SAID CURVE 174.06 FEET TO THE POINT OF TANGENCY; THEN S 16°04'07"E, A DISTANCE OF 102.70 FEET TO THE POINT OF CURVATURE OF A CURVE CONCAVE NORTHEASTERLY, HAVING A RADIUS OF 100.00 FEET, A CENTRAL ANGLE OF 30°39'22" AND A CHORD BEARING AND DISTANCE OF S 31°23'48"E, 52.87 FEET; THEN ALONG AND WITH THE ARC OF SAID CURVE 53.50 FEET TO THE POINT OF TANGENCY; THEN S 46°43'29"E, A DISTANCE OF 150.91 FEET TO THE POINT OF CURVATURE OF A CURVE CONCAVE NORTHEASTERLY, HAVING A RADIUS OF 75.00 FEET, A CENTRAL ANGLE OF 49°33'32" AND A CHORD BEARING AND DISTANCE OF S 71°30'15"E, 62.87 FEET; THEN ALONG AND WITH THE ARC OF SAID CURVE 64.87 FEET TO THE POINT OF TANGENCY; THEN N 83°33'29"E, A DISTANCE OF 298.62 FEET; THEN N 61°22'06"E, A DISTANCE OF 93.40 FEET TO THE POINT OF CURVATURE OF A CURVE CONCAVE SOUTHEASTERLY, HAVING A RADIUS OF 125.00 FEET, A CENTRAL ANGLE OF 34°01'11" AND A CHORD BEARING AND DISTANCE OF N 78°22'41"E, 73.13 FEET; THEN ALONG AND WITH THE ARC OF SAID CURVE 74.22 FEET TO THE POINT OF TANGENCY; THEN S 84°36'43"E, A DISTANCE OF 130.19 FEET; THEN S 69°08'24"E, A DISTANCE OF 86.20 FEET TO A POINT ON THE WESTERLY RIGHT OF WAY OF S.E. HIGHWAY 475 (66 FEET WIDE) (ALSO KNOWN AS STATE ROAD 475 AND COUNTY ROAD 475); THEN N 20°51'36"W, ALONG SAID RIGHT OF WAY LINE, A DISTANCE OF 1264.15 FEET TO THE SOUTH LINE OF LANDS DESCRIBED IN OFFICIAL RECORDS BOOK 2203, PAGE 1397; PUBLIC RECORDS OF MARION COUNTY, FLORIDA; THEN ALONG AND WITH SAID SOUTH LINE THE FOLLOWING BEARINGS AND DISTANCES: S 81°15'42"W, A DISTANCE OF 873.31 FEET; S 74°48'29"W, A DISTANCE OF 501.58 FEET; S 83°08'30"W, A DISTANCE OF 393.53 FEET; S 81°27'27"W, A DISTANCE OF 90.79 FEET; N 46°34'22"W, A DISTANCE OF 83.48 FEET; N 09°45'15"E, A DISTANCE OF 70.88 FEET; S 89°35'12"W, A DISTANCE OF 1274.63 FEET TO A POINT ON THE WEST LINE OF THE SE 1/4 OF THE SE 1/4 OF SAID SECTION 31; THEN N 00°07'37"W, DEPARTING SAID SOUTH LINE AND ALONG SAID WEST LINE OF THE SE 1/4 OF THE SE 1/4, A DISTANCE OF 281.46 FEET TO THE NE CORNER OF THE SOUTH 1/2 OF THE SW 1/4 OF THE SE 1/4 OF SECTION 31, TOWNSHIP 16 SOUTH, RANGE 22 EAST; THEN S 89°59'33"W, ALONG THE NORTH LINE OF THE SOUTH 1/2 OF THE SW 1/4 OF THE SE 1/4 OF SAID SECTION 31, A DISTANCE OF 842.85 FEET; THEN S 00°01'38"W, A DISTANCE OF 662.42 FEET TO THE POINT OF BEGINNING. CONTAINING 109.95 ACRES, MORE OR LESS.



LEGEND:

- L# = LINE NUMBER BF = BOARD FENCE COV = COVERED  
BWF = BARBED WIRE FENCE C = CALCULATED P = PLAT CALL  
CL = CENTERLINE CONC = CONCRETE  
D = DEED CALL FM = FIELD MEASUREMENT  
POB = POINT OF BEGINNING HWF = HOG WIRE FENCE  
OR = OFFICIAL RECORDS BOOK OU = OVERHEAD UTILITY LINES  
POC = POINT OF COMMENCEMENT R/W = RIGHT OF WAY  
SEC = SECTION TWP = TOWNSHIP RGE = RANGE  
TYP = TYPICAL (throughout this survey drawing)  
— = UNDERGROUND UTILITY WARNING SIGN  
— = UTILITY POLE  
— = TELEPHONE CANISTER  
— = DOWNGUY WIRE  
— = ELECTRIC METER/BREAKER BOX  
— = STREET LIGHT  
— = FUEL VALVE COVER  
■ = FOUND 4"x4" CONCRETE MONUMENT, STAMPED "W.C. MELVIN, RLS 1918"  
⊗ = FOUND 8" OCTAGONAL CONCRETE MONUMENT  
● = SET/FOUND 5/8" STEEL ROD AND CAP STAMPED "D.W. HIRST, LB 6600"  
⊙ = FOUND NAIL AND DISK STAMPED "LB 6895"  
⊗ = FOUND 4"x4" CONCRETE MONUMENT, NO IDENTIFICATION  
⊗ = FOUND 5/8" STEEL ROD AND CAP STAMPED "REFERENCE CORNER, LB 6600"  
⊙ = FOUND 5/8" STEEL ROD AND CAP STAMPED "W.C. MELVIN, RLS 1918"  
⊕ = FOUND 5/8" STEEL ROD AND CAP STAMPED "MOORHEAD ENGINEERING"

D.W. HIRST & ASSOCIATES, INC.  
PROFESSIONAL LAND SURVEYORS  
P.O. BOX 3159, 12049 COUNTY HWY. 484  
BELLEVUE, FLORIDA 34421  
(904) 347-6776  
I HEREBY CERTIFY THAT THIS SURVEY MEETS THE APPLICABLE MINIMUM TECHNICAL STANDARDS AS SET FORTH BY THE FLORIDA BOARD OF PROFESSIONAL SURVEYORS AND MAPPERS IN CHAPTER 61017-6, FLORIDA ADMINISTRATIVE CODE, PURSUANT TO SECTION 472.027, FLORIDA STATUTES.  
DAVID W. HIRST, FL PSM NO. 5197  
NOT VALID WITHOUT THE SIGNATURE AND THE ORIGINAL RAISED SEAL OF A FLORIDA LICENSED SURVEYOR AND MAPPER

BOUNDARY SURVEY FOR THOMAS K. EQUELS			
DATE OF SURVEY: OCTOBER 11, 2012			
FILE NO: 12-9219 DC FILE: 9219.JOB			
FIELD BOOK: FOLDER PAGE: NA			
DWG FILE: 12-9219(EQUELS).dwg			
DRAWN BY: DWH CHK BY: DWH			
REVISIONS		DATE	BY
Sketch/Description		11/5/12	DWH
Bridle Trail Easement Note 7		11/12/12	DWH
Certifications		11/13/12	DWH
Line Table		11/14/12	DWH