

# Winery & Vineyard Located in Lodi, California

Lodi  
17036 North Locust Tree Road, Lodi, California, USA

39.0 Acres  
\$4,200,000.00

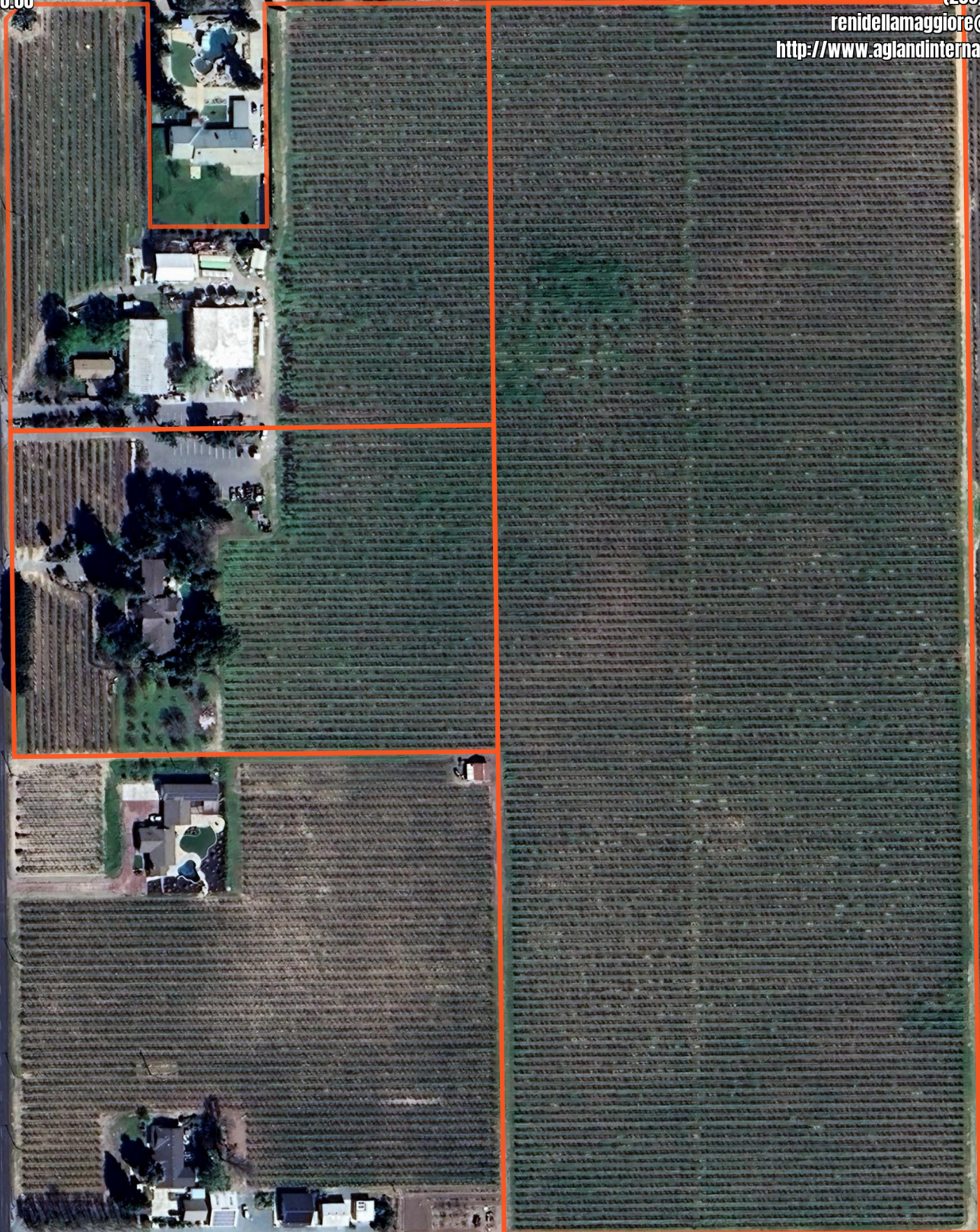


**Reni Della Maggiore, Inc.**

Reni Della Maggiore  
(209) 649-7944

renidellamaggiore@msn.com


<http://www.aglandinternational.com>





# Winery & Vineyard Located in Lodi, California

## Legend

 Boundary

## Description

A permitted equipped winery with a zinfandel vineyard on a total of 39+/- acres. Located in Lodi, CA (District 11). Improvements include a permitted 5,000 sq ft winery, 4,000 sq ft office, 2900 sq ft combination tasting room/residence with pool, tank storage area, and 1,200 sq ft modular home. Note: A tenant is operating the winery and tasting room, with the vineyard being farmed by a farm management company. The price is \$4,200,000. Contact Reni Della Maggiore DRE: 00671357 at 209-649-7944 or Gary McEnerney DRE: 00993923 at 916-761-8530.

DISCLAIMER: The information contained herein is as obtained by this broker from sellers, owners, or other sources. This information is considered reliable, neither this broker nor owners make any guarantee, warranty or representation as to correctness of any data or descriptions and the accuracy of such statements. The correctness and / or accuracy of any and all statements should be determined through independent investigation made by the prospective purchaser. Any offer for sale is subject to prior sale, errors and omissions, change of price, terms or other conditions or withdrawal from sale in whole or in part, by seller without notice and at the sole discretion of seller. Readers are urged to form their own independent conclusions and evaluations in consultation with legal counsel, accountants, and/or investment advisors concerning and all material contained herein.

Generated on: Nov. 12, 2024