

📄 Soil Report

Acres

Capabilities

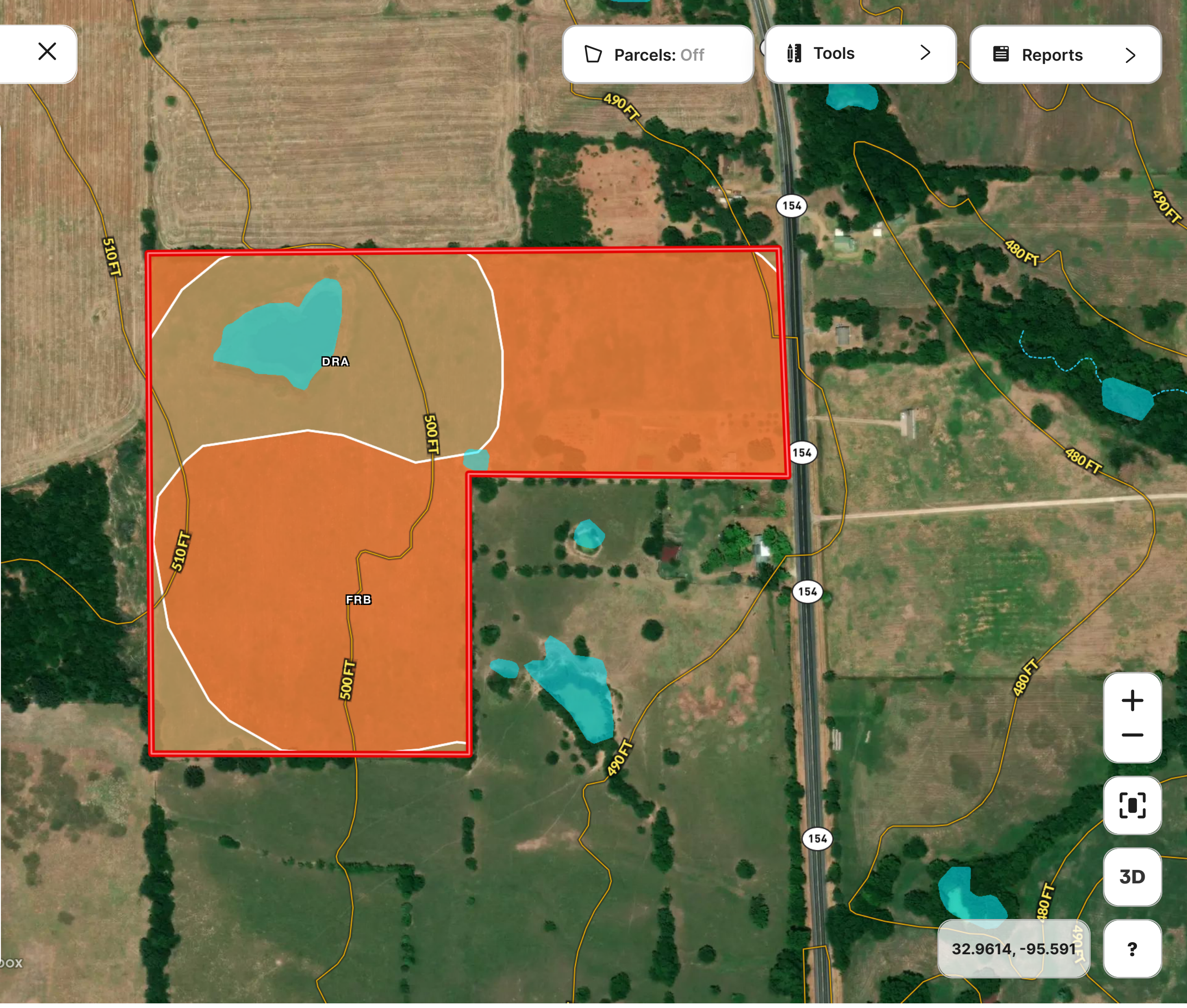
WAPI

📐 Boundary: 37.46 ac

Code	Description	Acres	%	CPI	NCCPI	CAP	?
FrB	Freestone fine sandy loam, 1 to 3 percent slopes	25.28	67.49%	-	72	3e	?
DrA	Derly, frequently ponded-Raino complex, 0 to 1 percent slopes	12.18	32.51%	-	40	4w	?
Totals 37.46 ac		0 CPI Average		61.6 NCCPI Average		3.33 Cap. Average	

Print 🖨️

Delete 🗑️



32.9614, -95.591